

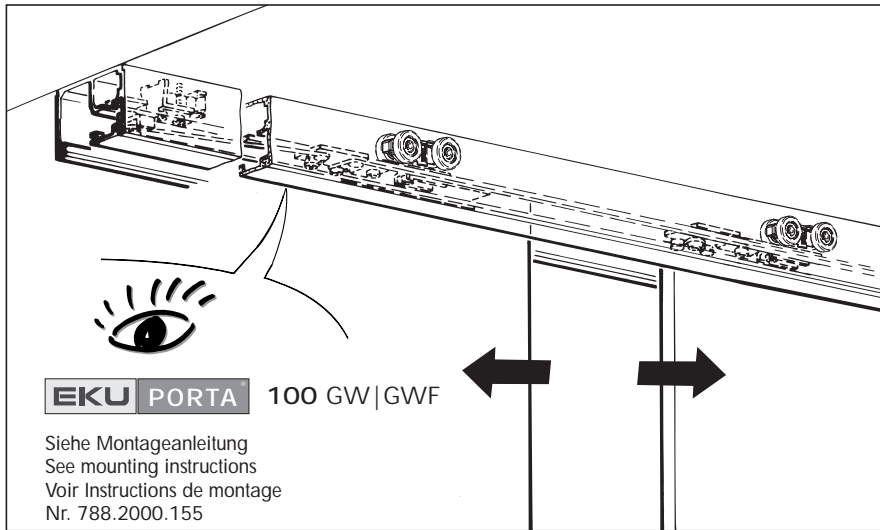
Montageanleitung Mounting instructions Instructions de montage

EKU PORTA

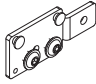
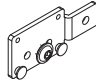
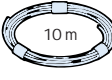

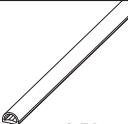

100 GW | GWF Synchro


Anforderungen erfüllt nach

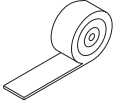
DIN-EN 1527 - 620 - 0 - 13




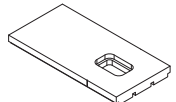
Garnituren / Sets / Garnitures

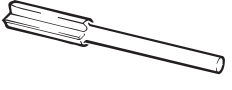
2 Türen Doors Portes		No. 057.3092.071	
	1x		1x
	1x		2x
	2.70m		2x

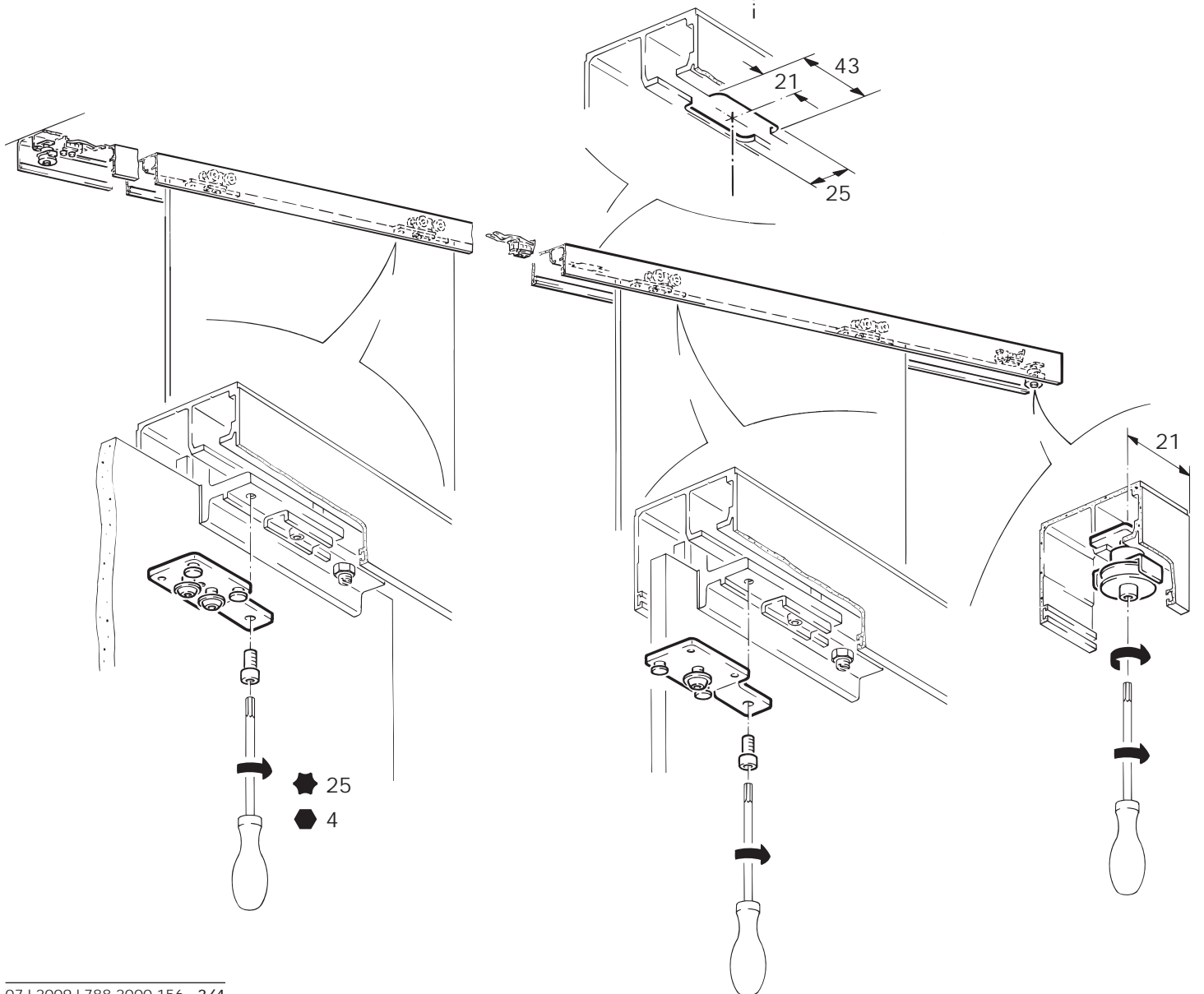
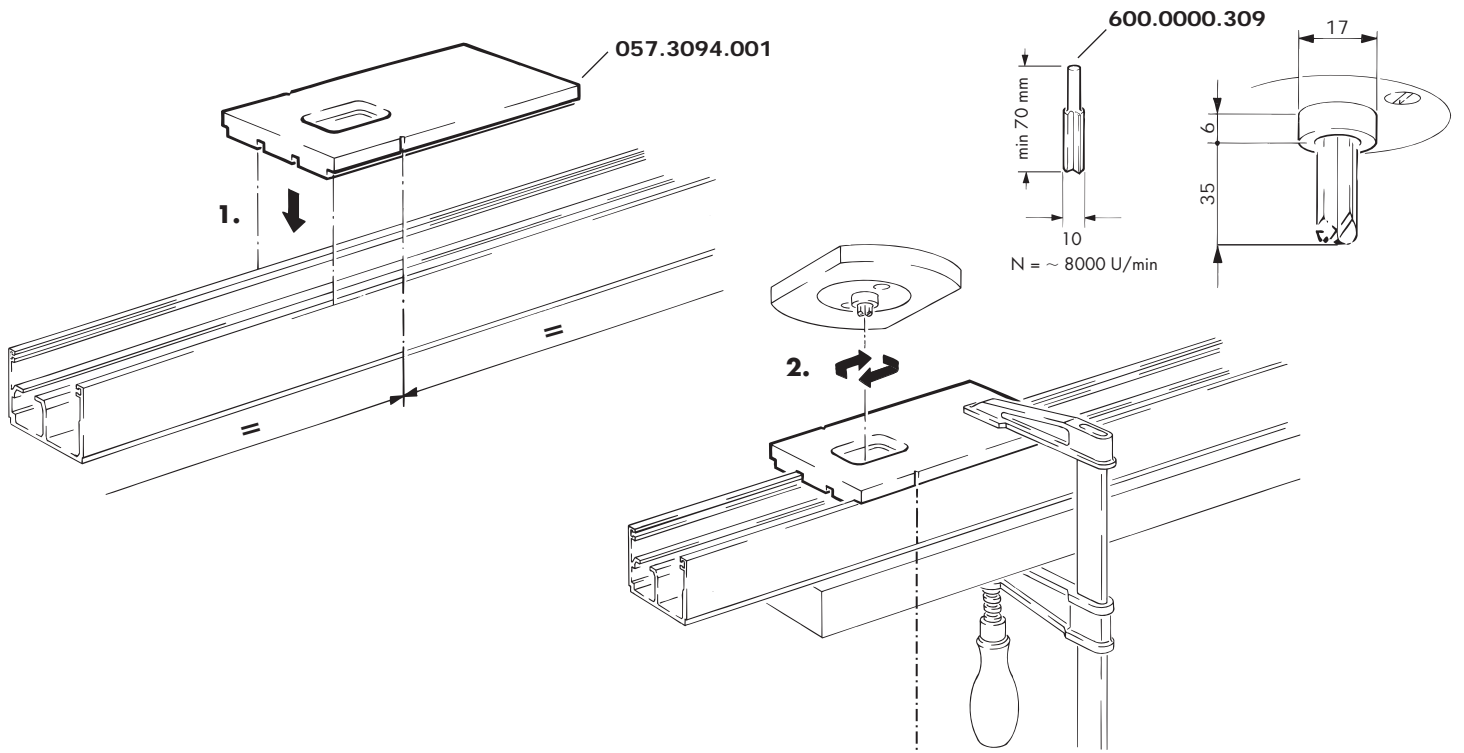
Glaskantenschutzprofil, Kunststoff, glasklar	10 mm/3000 mm	751.0001.300	
Protective transparent edge trims, plastic transparent	12 mm/3000 mm	751.0002.300	
Profils protecteurs de chant de verre, plastique transparent	12.7 mm/3000 mm	751.0003.300	

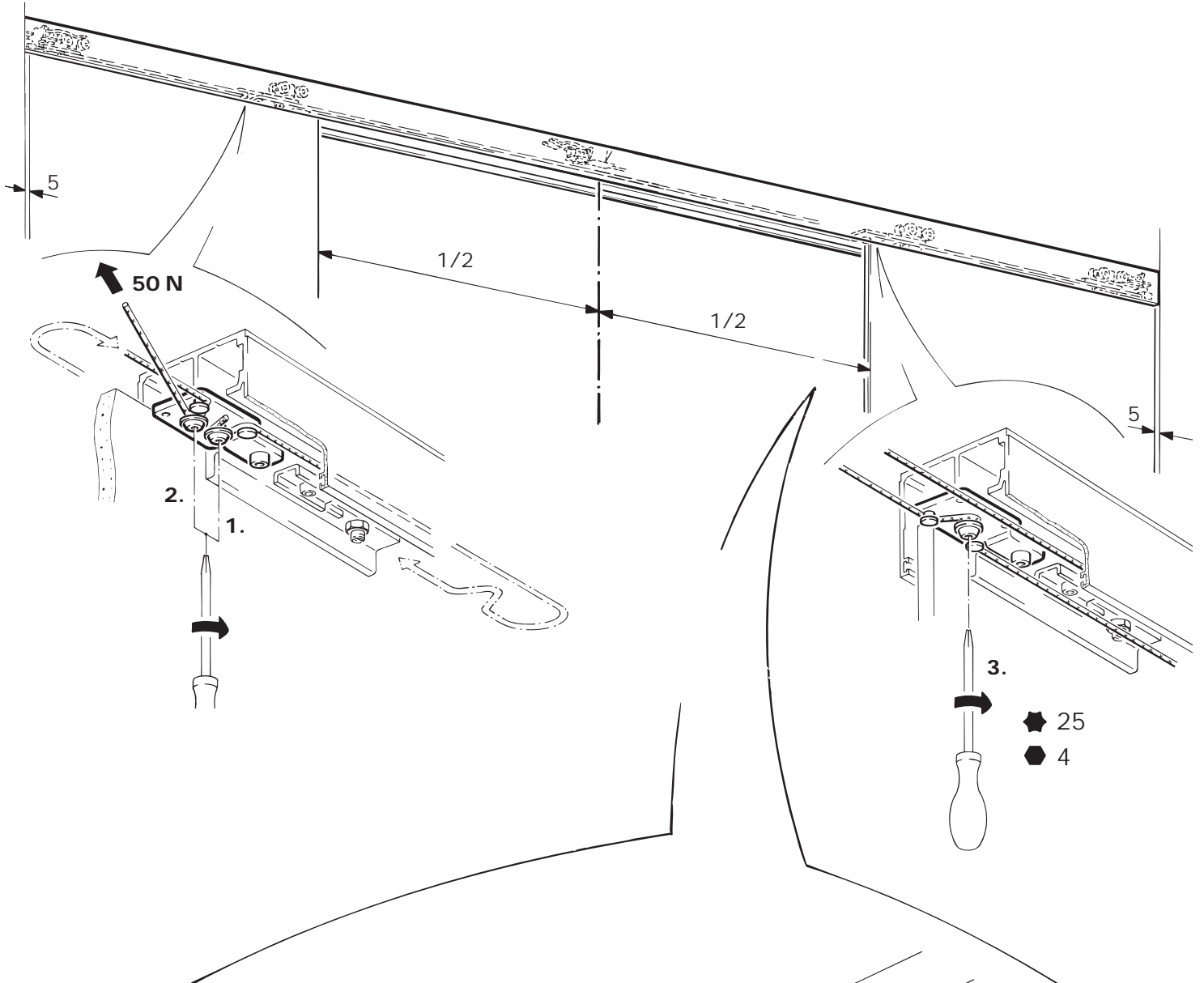
Doppelseitiges Klebeband zu Glaskantenschutzprofil, in Rollen	50 m	751.0004.000	
Double-sided adhesive tape for protective edge trims, in coils			
Ruban adhésif doubleface pour profil protecteur de chant de verre			

Glaskantenschutzprofil, Kunststoff schwarz, selbstklebend, in Rollen	10 m	057.3080.002	
Protectiv edge trims, plastic black, self-adhesive, in coils			
Profils protecteurs de chant de verre, plastique noir, autocollants			

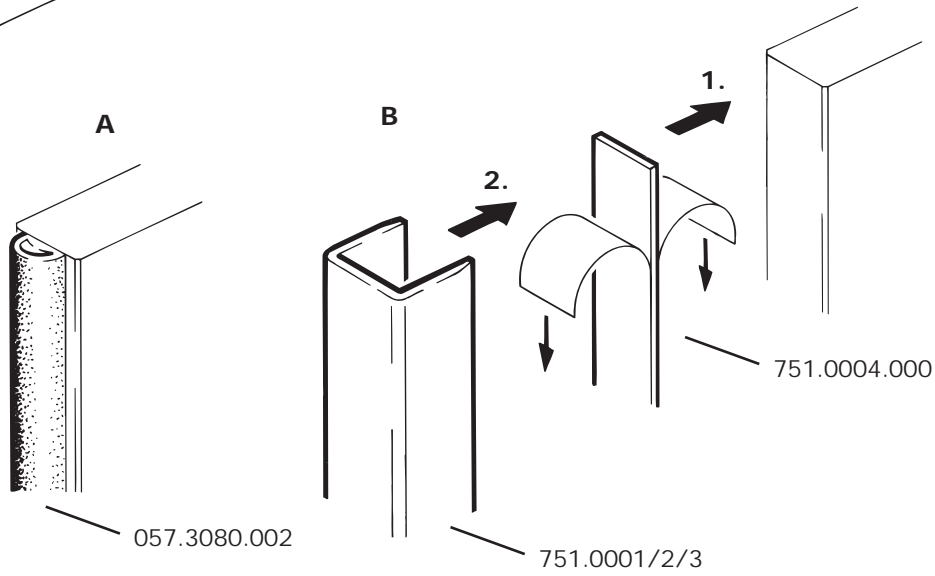
Frässhablone, für mod. GW, GWF (Synchro)		057.3094.001	
Milling jig, for mod. GW, GWF (Synchro)			
Gabarit de fraisage, pour mod. GW, GWF (Synchro)			

Nutfräser HM (Hartmetall), Durchmesser 10 mm, Länge 70 mm		600.0000.309	
Groove cutter HM (hard metal), diameter 10 mm, length 70 mm			
Fraise à rainurer HM (métal dur), diamètre 10 mm, longueur 70 mm			





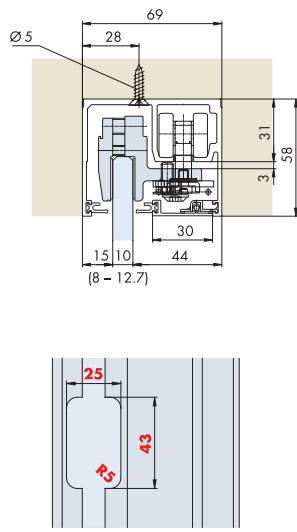
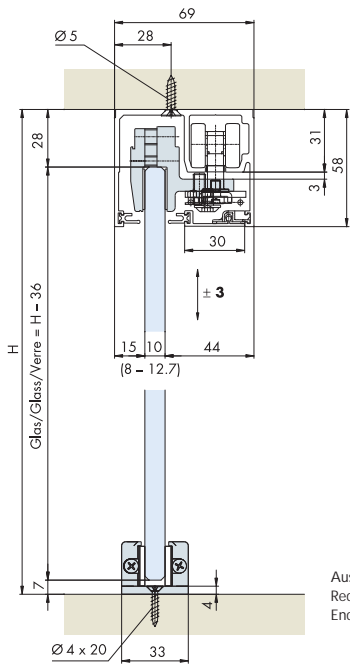
Optional



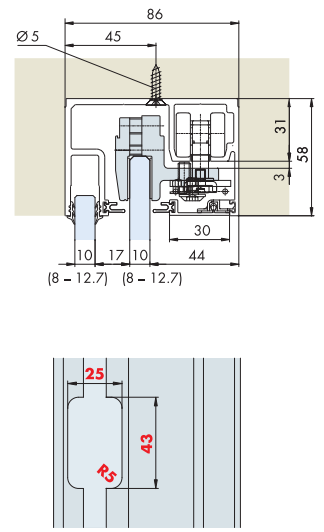
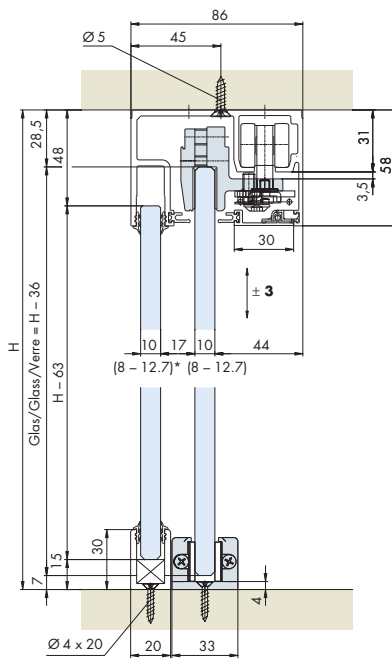
Einbaubeispiele / Mounting examples / Exemples de montage

mod. GW Synchro

mod. GWF Synchro



Ausfräsung zum Ein-/Ausfahren Laufwerk und Stopper
Recess for sliding running gear and stop in and out
Encoche pour introduire/sortir le chariot et la butée



Ausfräsung zum Ein-/Ausfahren Laufwerk und Stopper
Recess for sliding running gear and stop in and out
Encoche pour introduire/sortir le chariot et la butée

